

Macro Key Manager

Presented by
Brenda Burling

Introduction



Macro Key Manager is a kind of special tablet application software. Through Macro Key Manager, you can set up the keyboard events (Copy= “Ctrl+C”) or hyperlinks which you use mostly. And then, save it as your favorite macro key profile.



There are several default profiles. Part of the macro keys are default macro keys in which the settings are fixed already and can not be modified.



Other macro keys are non-default macro keys and the setting can be defined and modified. However, if these default profiles do not meet your requirements, you can create new profiles by yourself.



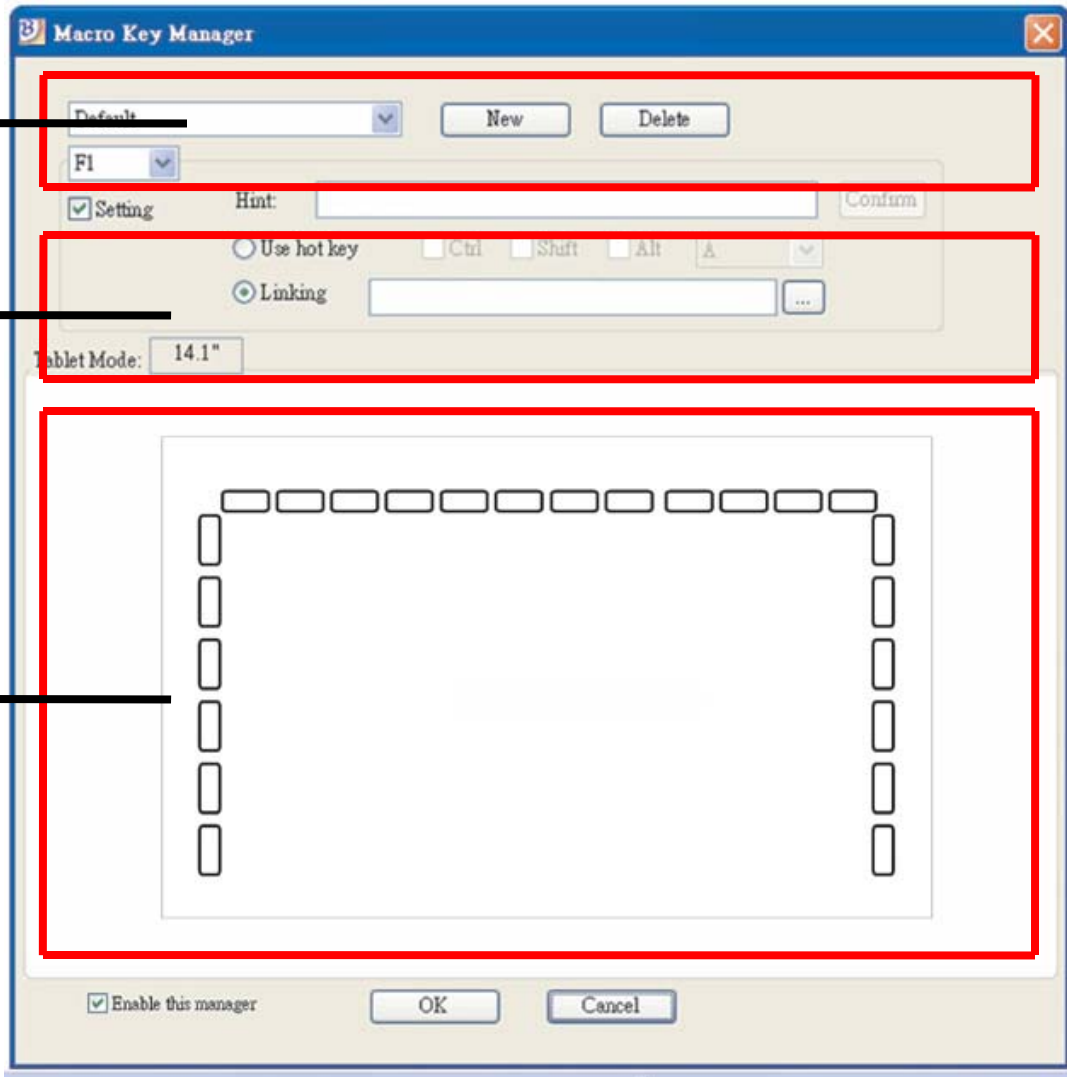
Due to the keyboard events are not unified in different software, the function of “open.exe” enables the macro key manager profile according to the right software. If you do not set the “open.exe”, the macro key manager may work unexpectedly in different software.



Macro Key Manager Control Panel

Introduction



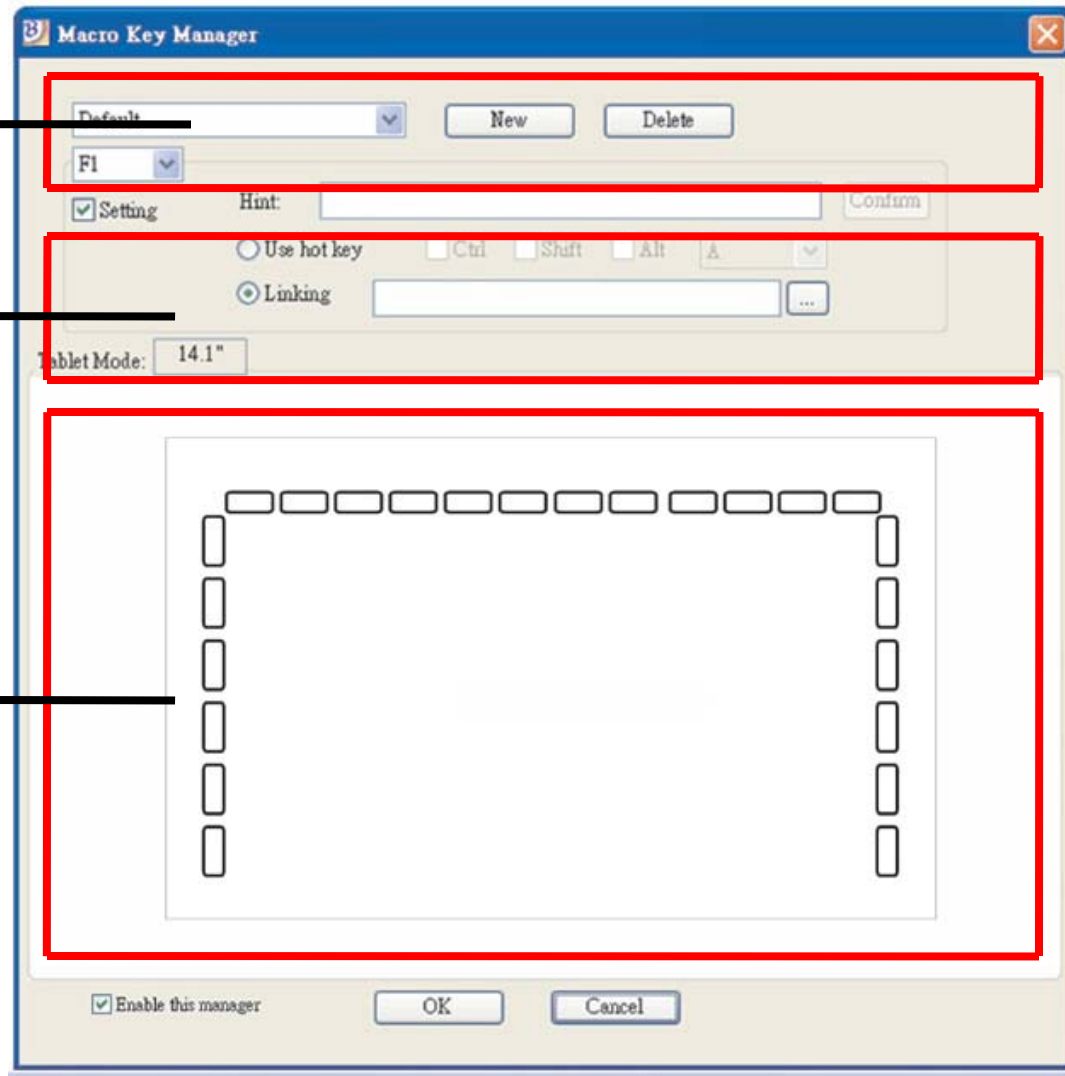


Preview Area

Macro Key Setting Area

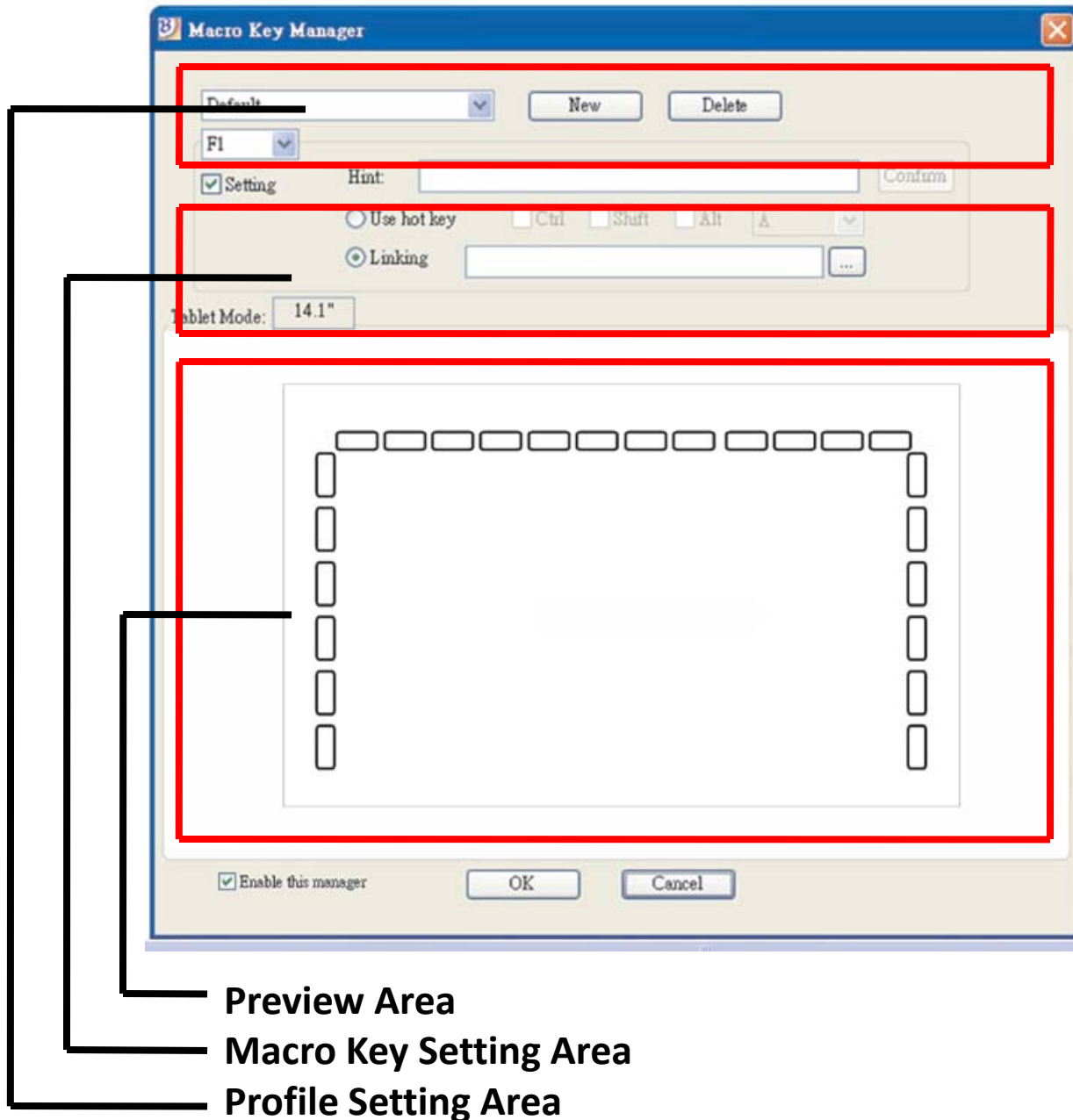
Profile Setting Area



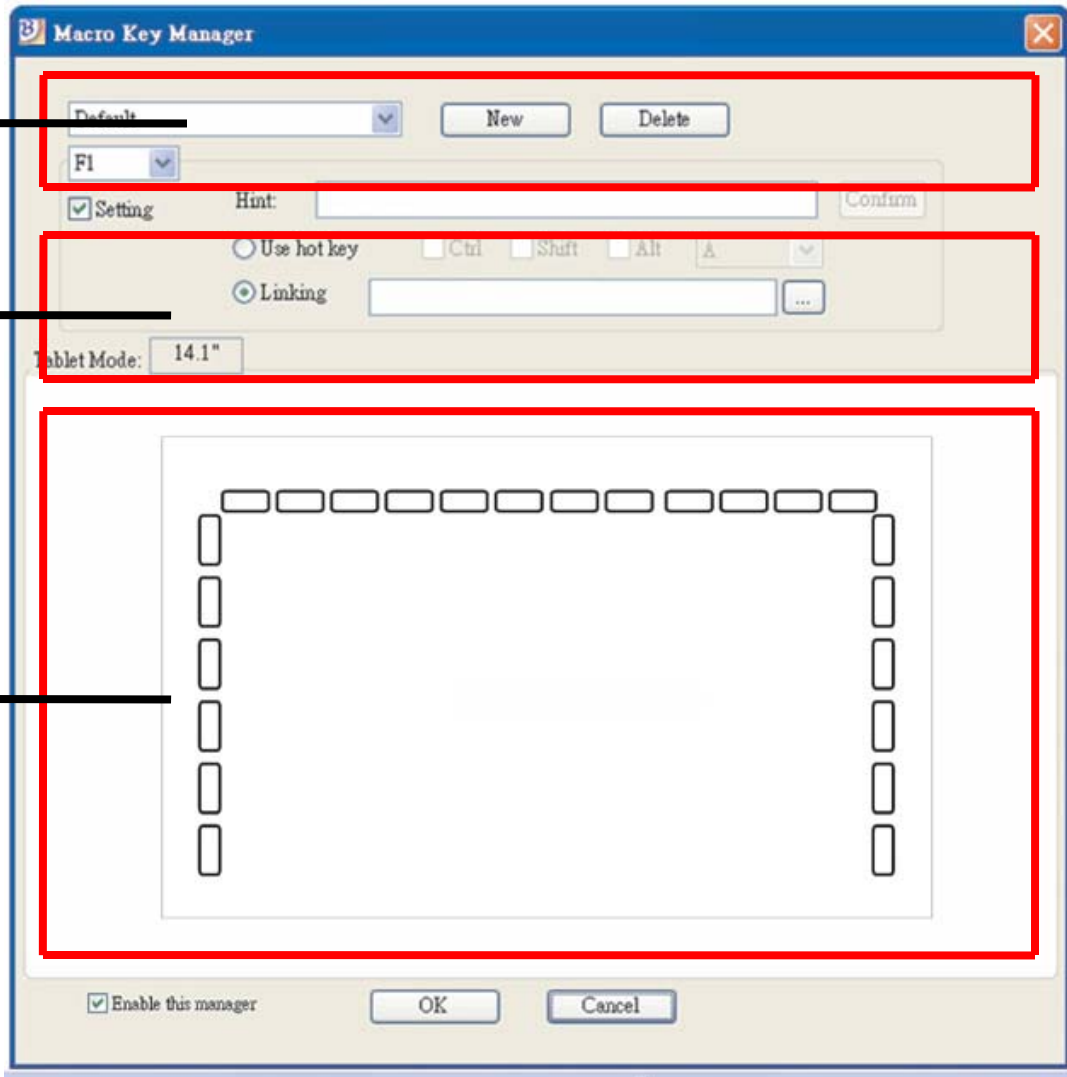


Preview Area
Macro Key Setting Area
Profile Setting Area

Profile
Setting
Area:
You can
select,
create or
modify
macro
key
profiles



Macro Key Setting Area:
You can set the function of an individual Macro Key here. There are two kinds of setting. One is keyboard event setting and the other is hyperlink setting. Also, you have to name the hint as you like to finish the setting process.




Preview Area

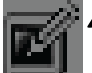
Macro Key Setting Area

Profile Setting Area

Preview Area:
You can see the tablet image and the macro keys of your tablet. By hovering over the macro key, the macro key hint will pop up next to the key.

Installation

Once you install “Macro Key Manager” and plug the tablet into your PC, the icon “” will be shown in the System Tray.

However, you can choose to disable the Macro Key Manager by clicking the right button. Once you disable Macro Key Manager or un-plug your tablet from the PC, the original icon will be changed into the icon “”.



How to Set Up a New Profile




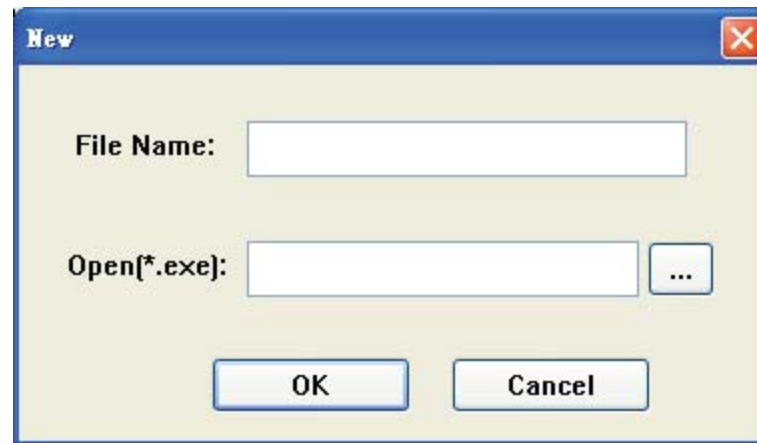
1. Click “New” and name the profile.

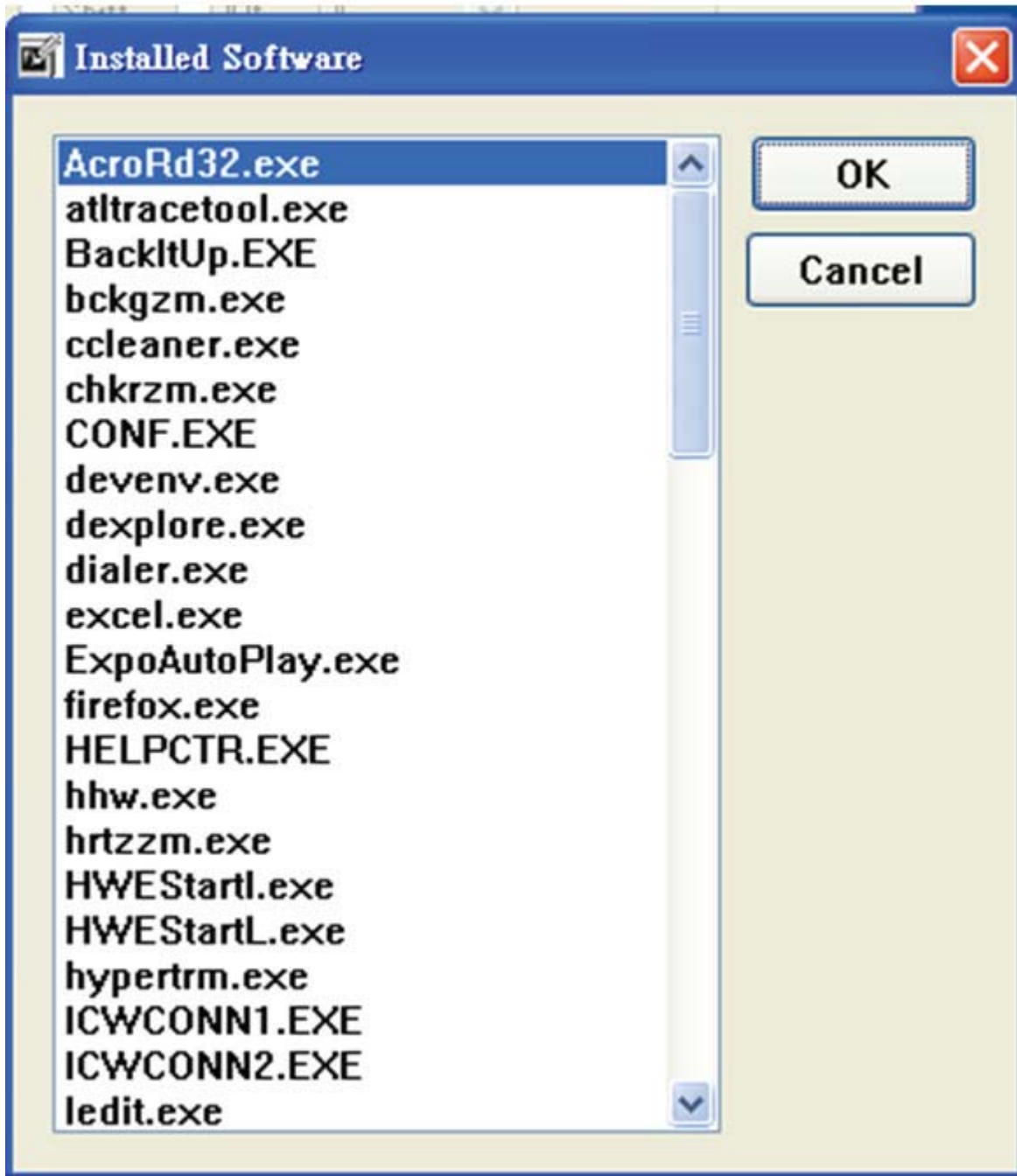


A screenshot of a standard Windows-style dialog box titled "New". The dialog has a blue title bar with a close button (red 'X') in the top right corner. The main area is light beige. It contains two input fields: "File Name:" followed by a text box, and "Open(*.exe):" followed by a text box and a small button with three dots "...". At the bottom, there are two buttons: "OK" and "Cancel".



2. If a profile is set for a particular software, click the browser icon . If not, please skip this process and click “OK” to finish setting a new profile.





3. All installed software is shown. Click the right software. Click "OK".



4. Click “OK” to finish this setting.



How to Modify a Profile



1. Select the profile you want to modify.

2. Follow the macro key setting steps to modify.

3. Click “OK”.



How to Delete a Profile



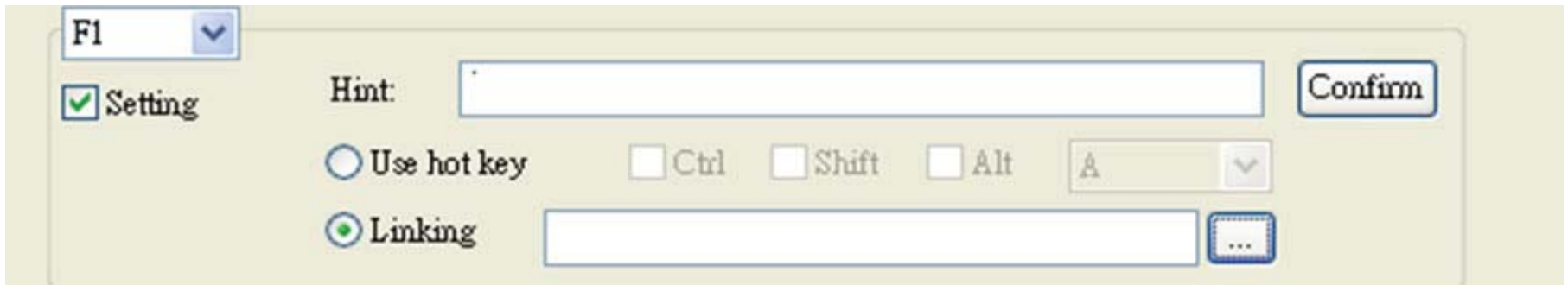
1. Select the profile you want to delete.

2. Click “Delete”.



How to Set Up Macro Key Function

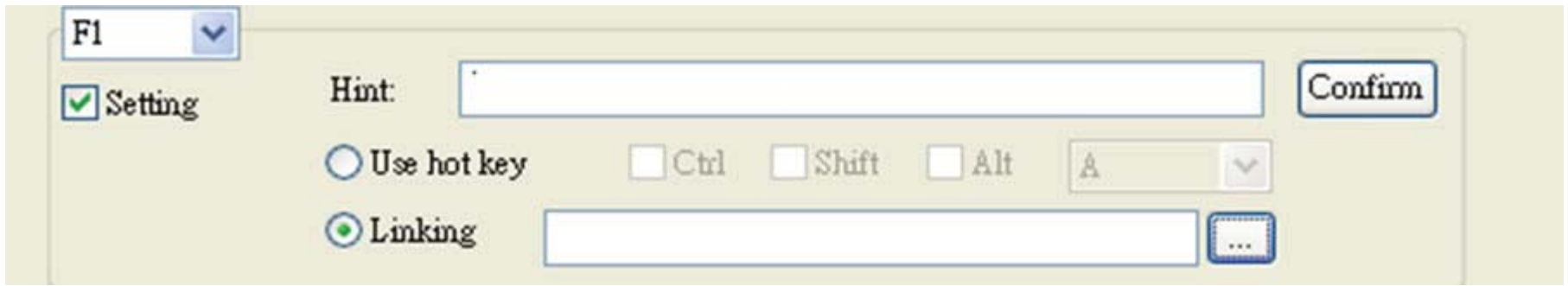




A. Click “Setting” to enable the setting function.

B. Key-in the name you want to use as the macro key function hint (necessary).





C. Define the function as hot key or hyperlink.

D. Click “Confirm”.



Setting:

Hover the cursor over the macro key manager icon in the system tray, and then click the correct button.



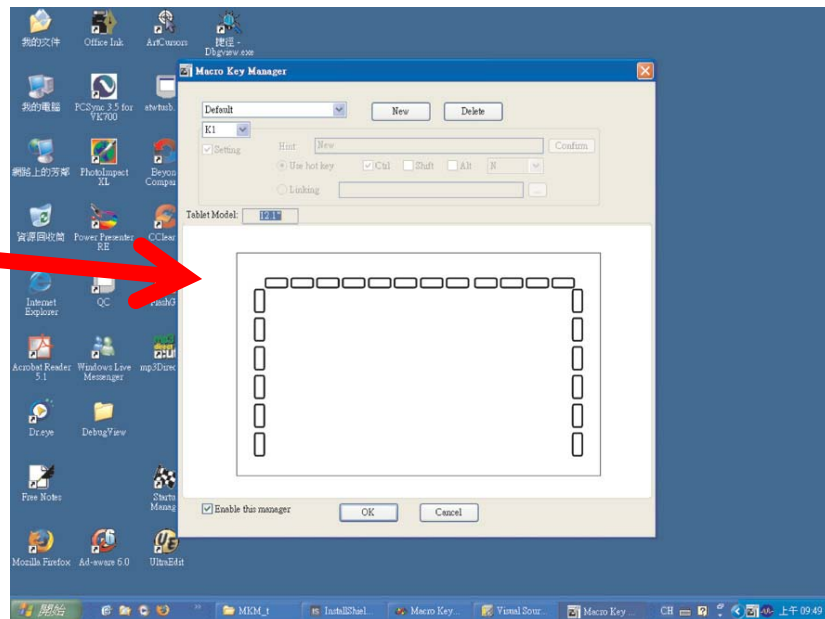
ABOUT

***Shows Macro Key Manager Version,
Driver Version, and
Firmware Version.***

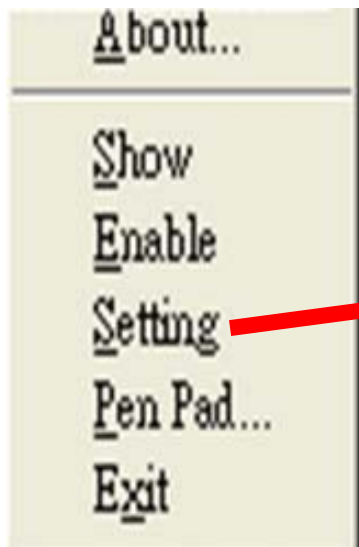


SHOW

Shows the Macro Key Manager User Interface.



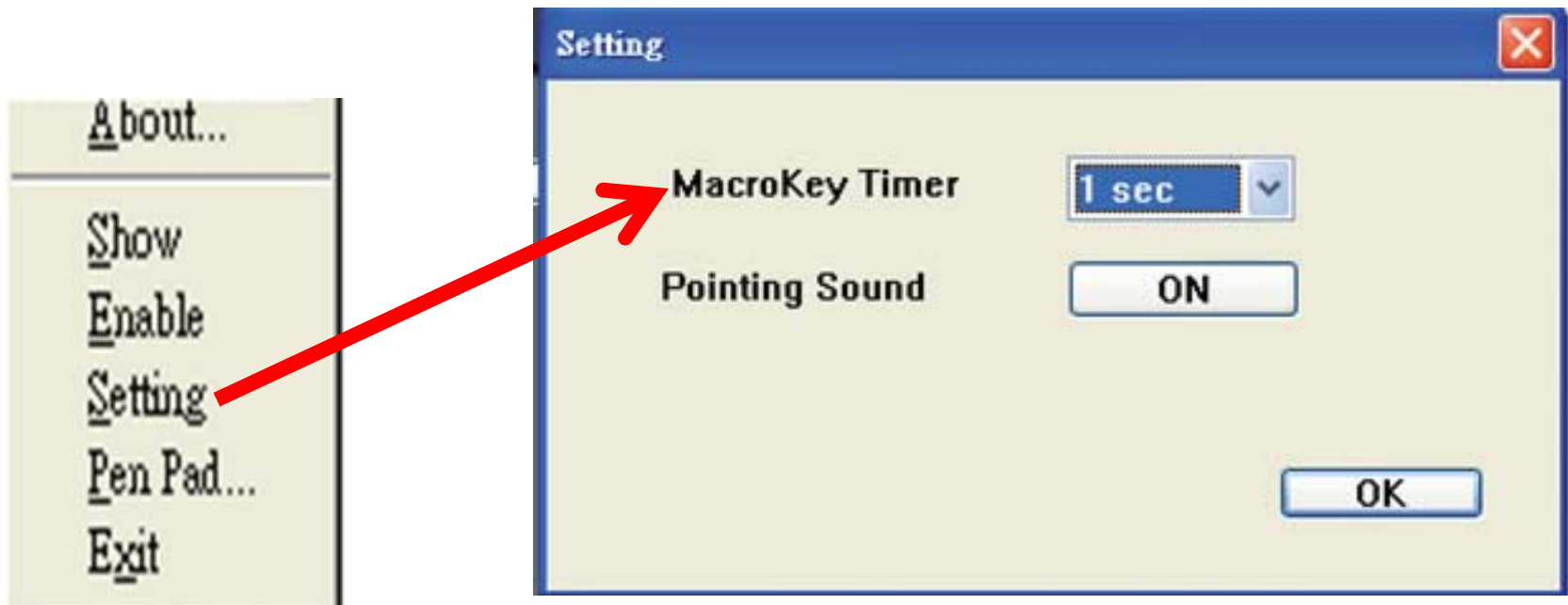
SETTING



SETTING

Macro Key Timer

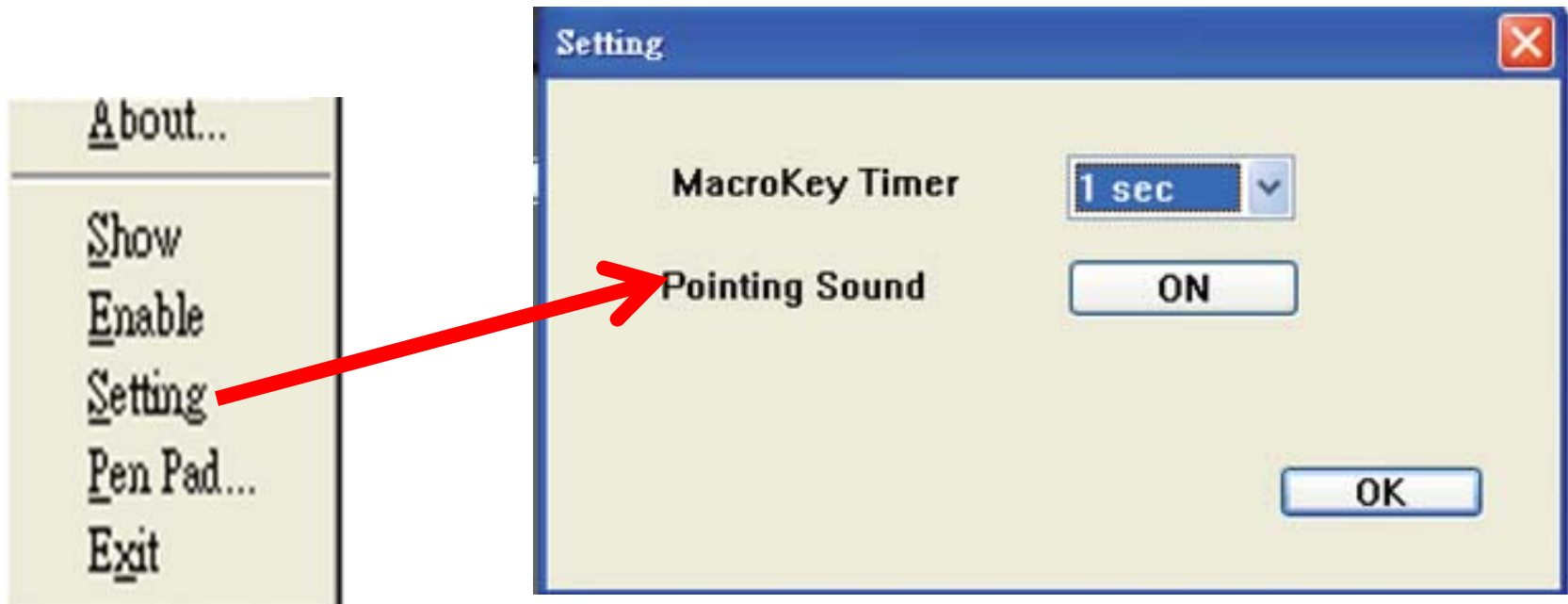
You can set the timer for how long a macro key function will work. There are four different choices-- 0, 1, 1.5 and 3 seconds can be your alternatives, which means that only when you use a pen to point the macro key area for 0, 1, 1.5, or 3 seconds, the macro key works.



SETTING

Pointing Sound:

You can choose to get the pointing sound or not while the pen tip is pointing on the tablet.



***Pen Pad (only in Windows
2000/XP/Vista basic)***

***This is tablet driver. Please
reference the driver usage with
driver manual.***



Start Use

After the “setting profiles” process, you can start to use macro key manager now. Please select the profile you want to use and click “OK” and then this selected profile will be the active profile unless changed by you.



PEN PAD DRIVER

Using the Pen



Pen

The pen is used as a normal handwriting pen. On the “About” tab, make sure the “Tracking Mode” is set to “Pen”.



Side Button

On the “Buttons” tab, click on “Side Button 1” to customize the side button.

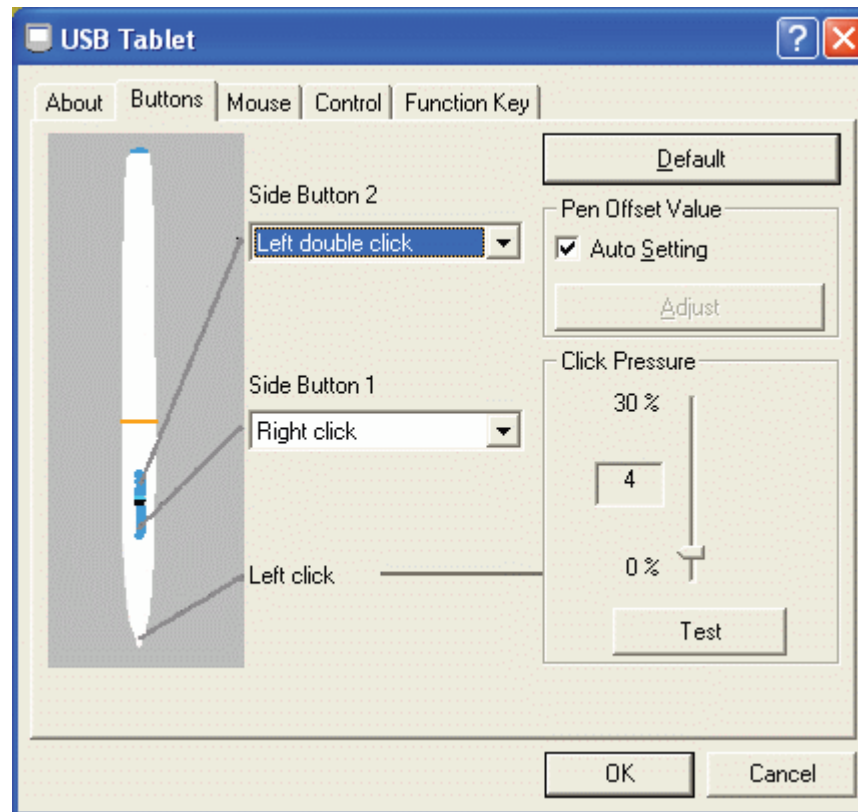


Default settings:

Side Button 1 = right click

Side Button 2 = left double click

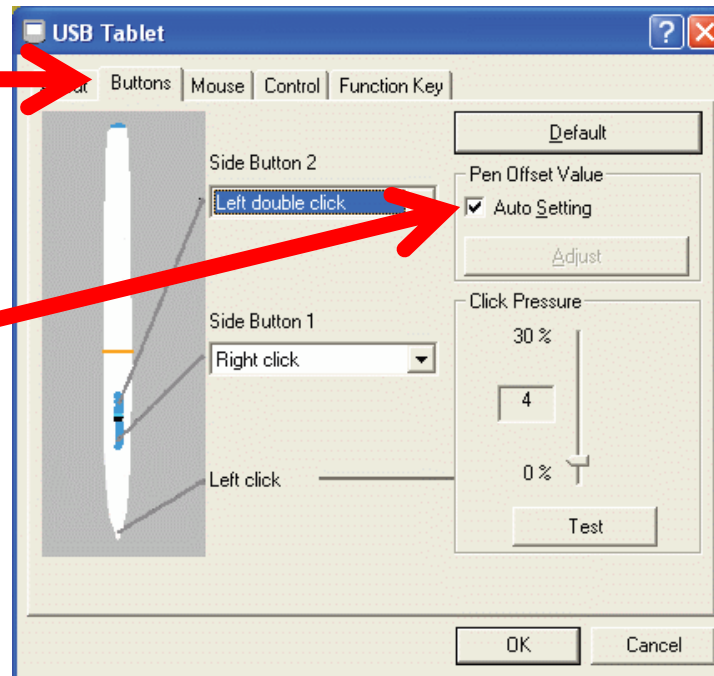
The Pen Point = left click



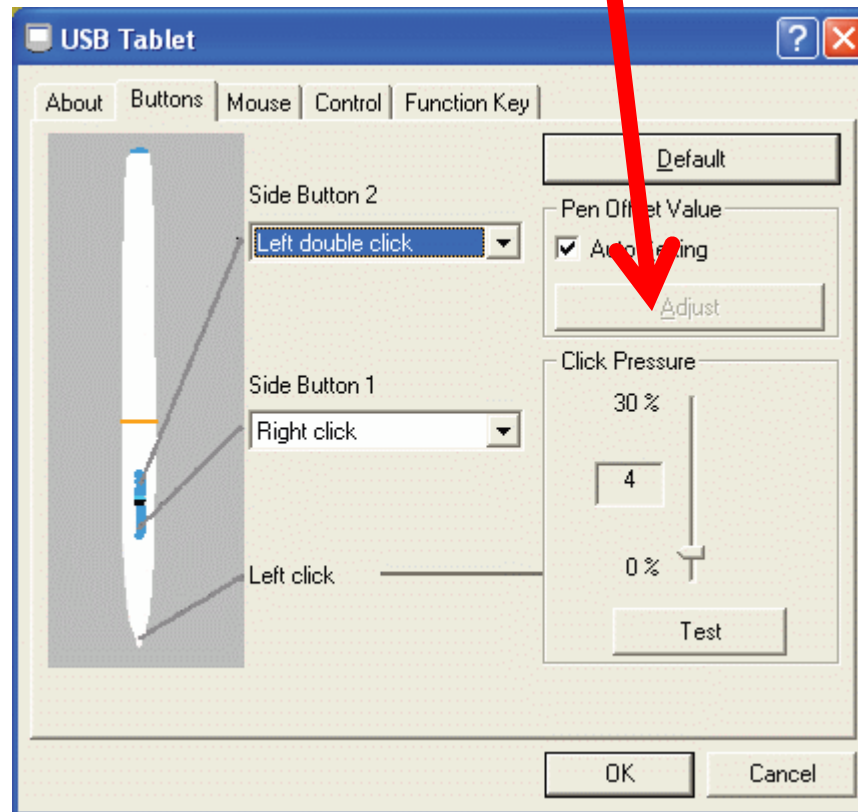
Pen Offset Value

When using the tablet, if you want to use a new pen without restarting the computer, you need to perform the “Pen Offset Value” setting.

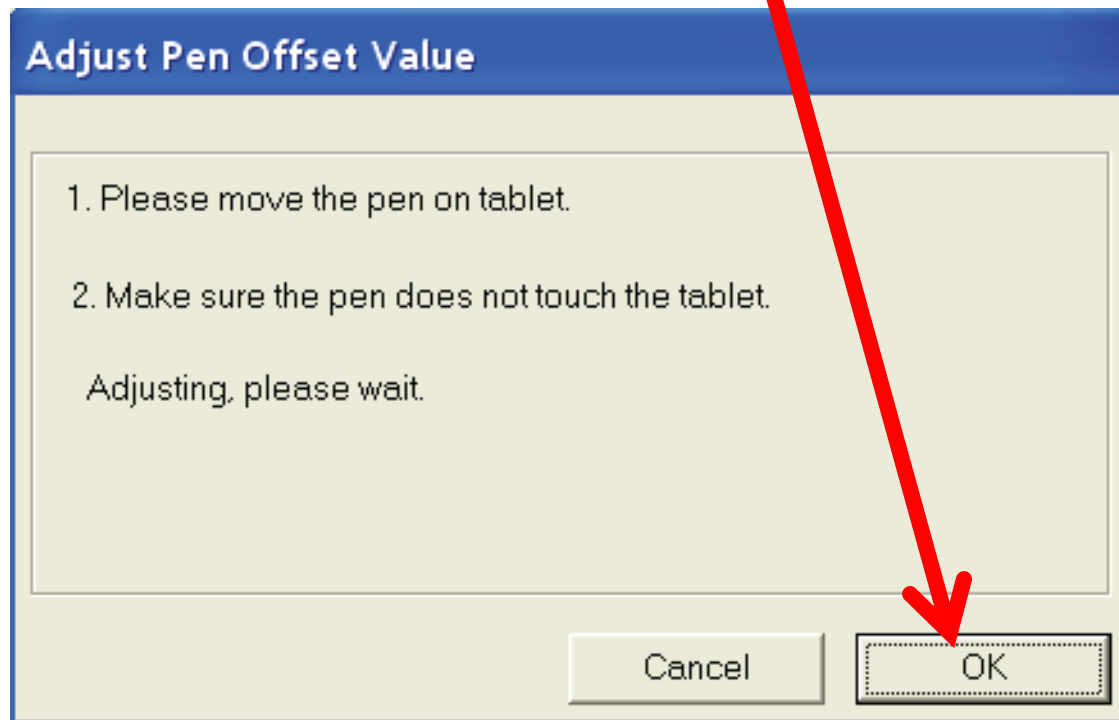
1. On the “Buttons” tab, uncheck the “Auto Setting” box to remove the former value.



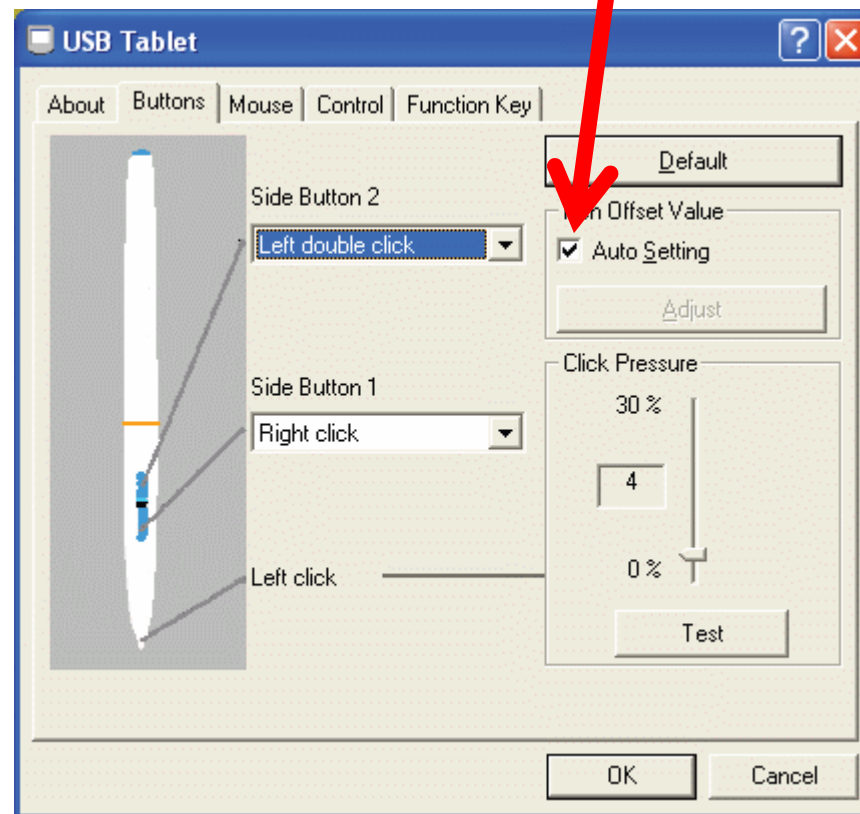
2. Click the “Adjust” button.



Then follow the on-screen instructions for adjustment. Tap the “OK” button when the “OK” message appears.



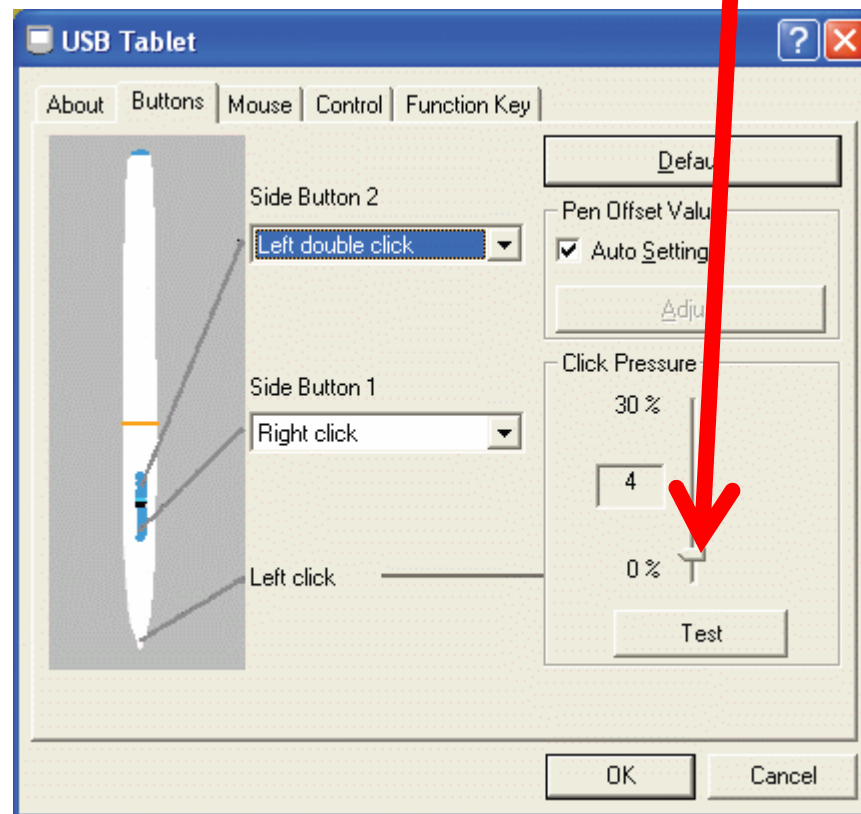
3. Check the “Auto Setting” box for your computer to detect the new pen offset value automatically when restarted.



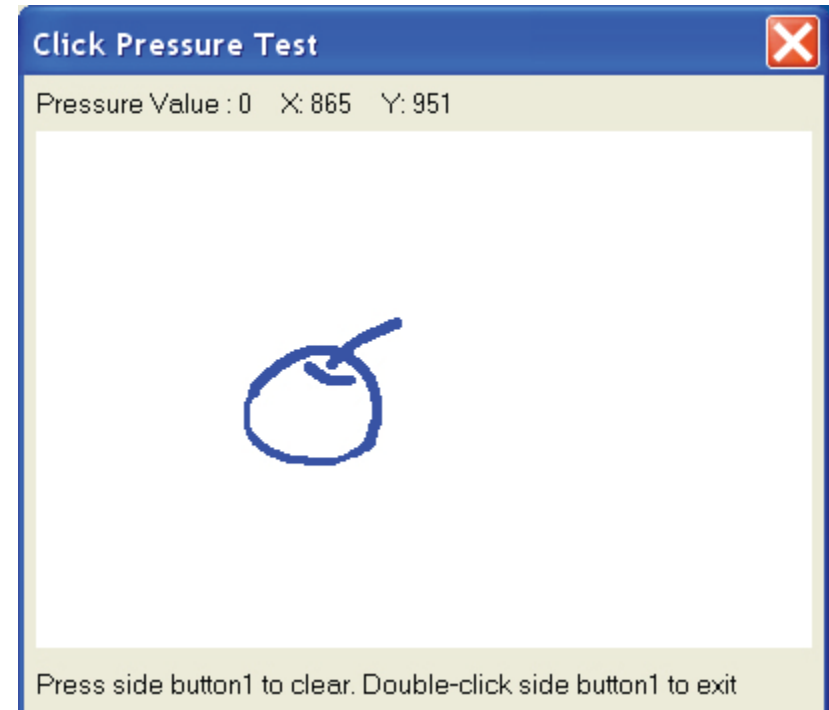
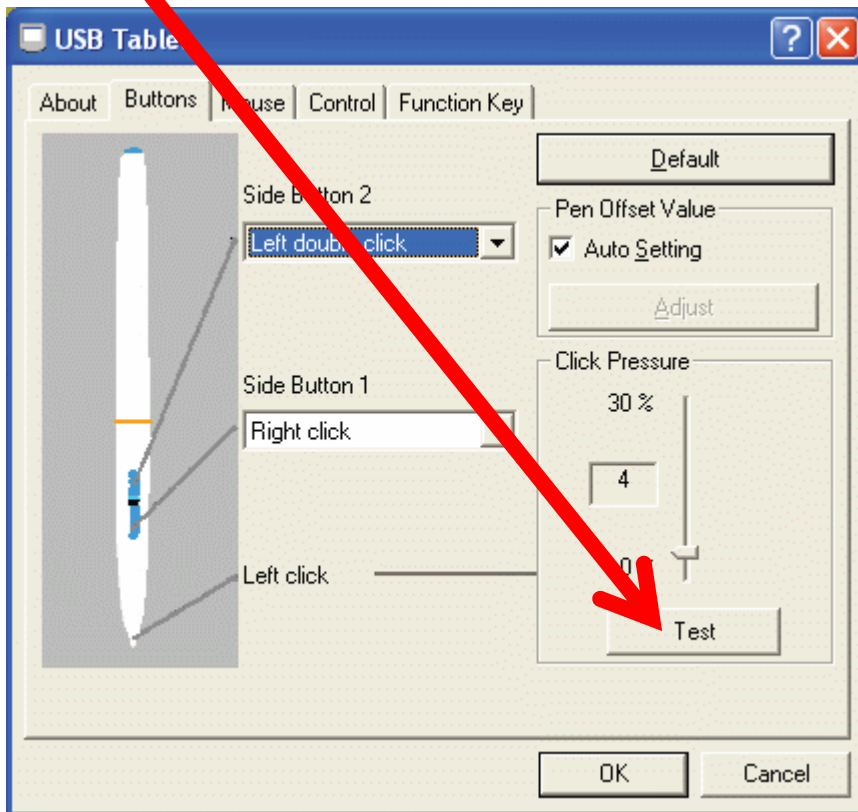
Click Pressure



1. On the “Buttons” tab, move the slider up and down to adjust the pen pressure from 0 to 30 (0 is the lightest, and 30 is the heaviest).



2. Click the “Test” button to launch the “Click Pressure Test” writing area. Then you can test if the setting is correct.



The End!